

Clinical Skills & Simulation Center



Welcome to UCSF Fresno
Clinical Skills & Simulation
Center Newsletter

Monday - Friday | 8am - 5pm

Visit our
Website

What's New?

New Arrivals

Check out our **NEW** recourses and add them to your training.

Skills Lab Usage

Compare Lab usage with other programs for FY2023

Expansion Project

Stay updated with our timeline for our reconfiguration

SIM News

Latest conferences, UC Consortium, and more.

Gallery

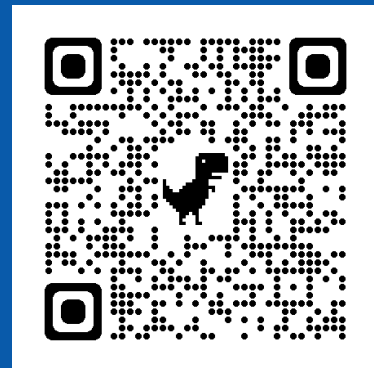
See the latest activities taking place at the Fresno SIM Lab.

Perspective

An article authored by, Ansari Shabman Ateeq

[CLICK HERE](#)

or Scan the QR Code to
Request a session!



NEW ARRIVALS

Hand and Wrist Injector Training

Suitable for all levels of training, the Hand & Wrist Injection Trainer allows trainees and clinicians to practice and teach injections in five different locations within the hand and wrist. An anatomically correct representation of an adult hand and partial forearm with important landmarks and underlying structures, the palpation-guided trainer allows...

- Facilitates injection in five key sites of the hand and wrist.
- Presence of the Median Nerve allows for negative feedback.
- App provides interactive real-time feedback.
- Each site can withstand extensive repeated injections.
- Skin can be easily removed and changed.
- Interactive model anatomy.



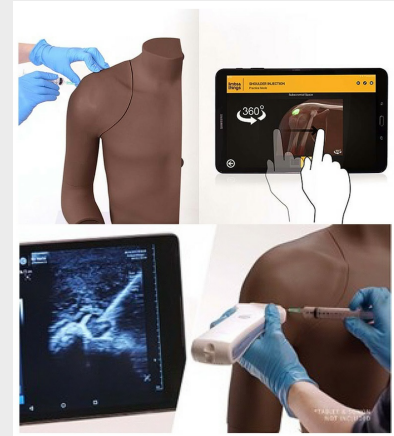
Shoulder Injection Trainer

Training can be given on the following injection sites on the shoulder:

- Acromioclavicular joint
- Glenohumeral joint
- Bicipital groove
- Subacromial space

This palpation guided shoulder injection trainer comes with an Android Tablet and a preinstalled app for use during training.

- Facilitates injection in five key sites of the hand and wrist.
- Presence of the Median Nerve allows for negative feedback.
- App provides interactive real-time feedback.
- Each site can withstand extensive repeated injections.
- Skin can be easily removed and changed.
- Interactive model anatomy.
- Interactive model anatomy



CATHI Endovascular Trainer

CATHI has such features such as Percutaneous Coronary Intervention (PCI) Advanced, Right Heart Catheterization (RHC)

CATHI is designed for the complete execution of all interventions with one insertion point (jugular, transradial, transfemoral). This simulator provides five internal tracking systems which allow the display of five independent instruments simultaneously.

This is our high-end full scope simulator, ideal for university hospitals or simulation centers. It is suitable for use in all medical specialties, including neuroradiology, cardiology, radiology, angiology and pneumology.

NOTE TO FACULTY

When booking, please consider that this trainer takes 30 minutes to set up by the skills lab staff.



Video Laryngoscope and Fiberoptic Bronchoscopes

The intubation video Endoscopes in 5.5 for adult and for pediatrics 3.0mm. Connects the CMAC monitor for a clear distortion free image. Compatible with all our airway trainers

- 5.5 mm Flexible Intubation Video Endoscope.
5.5mm x 65cm cm, 2.1 suction channel.
- 3.0 mm Flexible Intubation Video Endoscope.
2.85mm x 51.5cm no suction channel.

- 2 available monitors C-MAC



PACER MAN - *COMING SOON*

Simulab's Pacer Man® System is the first and only high-fidelity simulator for immersive transvenous pacing training—from needle insertion to electrical capture using all the clinical equipment. With Pacer Man, clinicians can practice the entire procedure—including identifying intrinsic bradycardias, assessing intracardiac waveforms and manipulating output and rate with a pacing generator.

Overview

- Ultrasound-guided venous identification and access with fluid aspiration
- Simulated Patient Monitor with:
- Real-time vitals including heart rate, arterial blood pressure, non-invasive blood pressure, and oxygen saturation.



SKILLS LAB USAGE

37,000+

Total Usage Since 2015

400+

Encounters
in 2023



EXPANSION PROJECT

We are moving forward with our reconfiguration project and expect to start moving in April or May.

Preliminary Timeline

Construction Start
April-May 2024

Anticipated Construction
August 2024

SIM NEWS

June
12

INACSL24
6/12/2024 - 6/15/2024

September
5

ASPE Annual Conference
6/23/2024 - 6/26/2024

August
6

SimGHOSTS 2024 Annual Conference (SG24GLOBAL)
8/6/2024 - 6/9/2024

GALLERY

Thank you Parkmedics!

See some highlights from the the Parkmedics Skills Trainings Course.





PERSPECTIVE

An article by Ansari Shabnam Ateeq

5 Determinants of Debrief Duration - A Guide

A common query amongst educators pertains to the ideal length of a debriefing session. It may be tempting to look for a 'formula'. Instead, consider key determinants of debrief duration:

1. Learner expertise level
2. Complexity of scenario
3. Number of learning objectives
4. Schedule constraints
5. Team Dynamics

For instance, if your team comprises novice learners dealing with complex scenarios involving multiple learning objectives, more time will be required for thorough debriefs..

Operational realities such as time constraints due to room availability, work shifts, and other commitments may limit how long you can spend on debriefs.

So debunk myths about magical ratios between simulation times versus debrief durations. Focus on achieving learning goals, utilize time effectively and hone your facilitation skills.

A point to note is that even if participants excel in simulations, this doesn't negate the need for thorough debriefing. They must understand what they did well and why they performed well.

Here are 7 action items to get the best out of your debrief sessions:

Define Learning Objectives

Before a simulation or debriefing session, define and reiterate learning objectives. This will guide the length of debriefing sessions.

Assess Learner Expertise Level

The level of expertise among learners can influence the duration of a debriefing session. Experienced learners may require less time while beginners may need detailed explanations.

Consider Scenario Complexity

Complex scenarios may necessitate longer discussions to ensure all aspects are covered.

Assess Team Dynamics

If you're working with teams, consider how their dynamics could impact the length of a debrief – some teams may take longer to express their thoughts and experiences than

others.

Operational Realities

Time constraints, training calendar, room availability, work shifts and resource shortages may limit how long you can spend on debriefs.

Debrief Even After Successful Simulations

Regardless of performance, always conduct a debrief so participants can understand both - areas of excellence and improvement. In the pursuit of effective debriefing, it's crucial to recognize that the process doesn't end when learners perform exceptionally well during simulations. Debriefing serves as the bridge between the simulated experience and lasting learning outcomes. It offers participants the opportunity to delve into why they succeeded, encouraging deeper reflection on their actions and decisions. This not only reinforces strengths but also helps them internalize the factors contributing to their success. In essence, it transforms a successful simulation into a profound learning experience. By emphasizing the value of debriefing irrespective of performance outcomes, educators can foster a culture of continuous improvement and holistic learning.

Falling Prey To Myths About Simulation-Debrief Ratios

There's no magic formula dictating this ratio; focus instead on effectively achieving learning goals within available resources and timeframes.

About the Author

Ansari Shabnam Ateeq

President of Healthcare Simulation Middle East. Master's in business administration with specializations in marketing & human resources, Certified Professional in Talent Development (CPTD®) and Certified Professional in Learning & Performance (CPLP®) credentials awarded by the Association for Talent Development (ATD), USA. Project Management Professional (PMP®) certified by the Project Management Institute (PMI), USA. Level 8 credential in Strategic Management and Leadership from Qualifi, UK. Professional Reader for the genres - business, self-help and workplace culture. Subject matter expert in instructional design, training delivery, talent development and learning technologies.



UCSF Fresno Clinical Skills Lab supports these Outreach Programs

[American
Heart
Association](#)

[National
Park Service
ParkMedic](#)

[UCSF
Fresno
Doctors
Academy](#)

[UCSF
Fresno Mini
Med School](#)

[Wonderful
education](#)

In support of professionalism we continue to ask that all lab equipment be handled with Clinical Skills Staff present before operating, or moving of any lab equipment.

559-499-6625
UCSF Fresno Clinical Skills Lab
155 N. Fresno St.
Fresno, CA 93701-2302

UCSF Fresno | 155 N. Fresno St., Fresno, CA 93701

[Unsubscribe brandy.nikaido@ucsf.edu](mailto:brandy.nikaido@ucsf.edu)

[Update Profile](#) | [Constant Contact Data
Notice](#)

Sent by lee.hagerty@ucsf.edu powered by



Try email marketing for free today!