

A scenic view of a forest with tall pine trees and a valley in the background. The foreground is filled with green grass and some rocks. The trees are tall and thin, with dense green foliage. In the distance, a valley with a winding road and some buildings is visible under a clear sky.

Introduction to the Incident Command System

Objectives

- Understand why ICS is used
- Understand ICS structure

Riddle Me This

- Why use ICS?
 - Organization
 - Completeness
 - Flexible
 - Standardization

Incident Command System

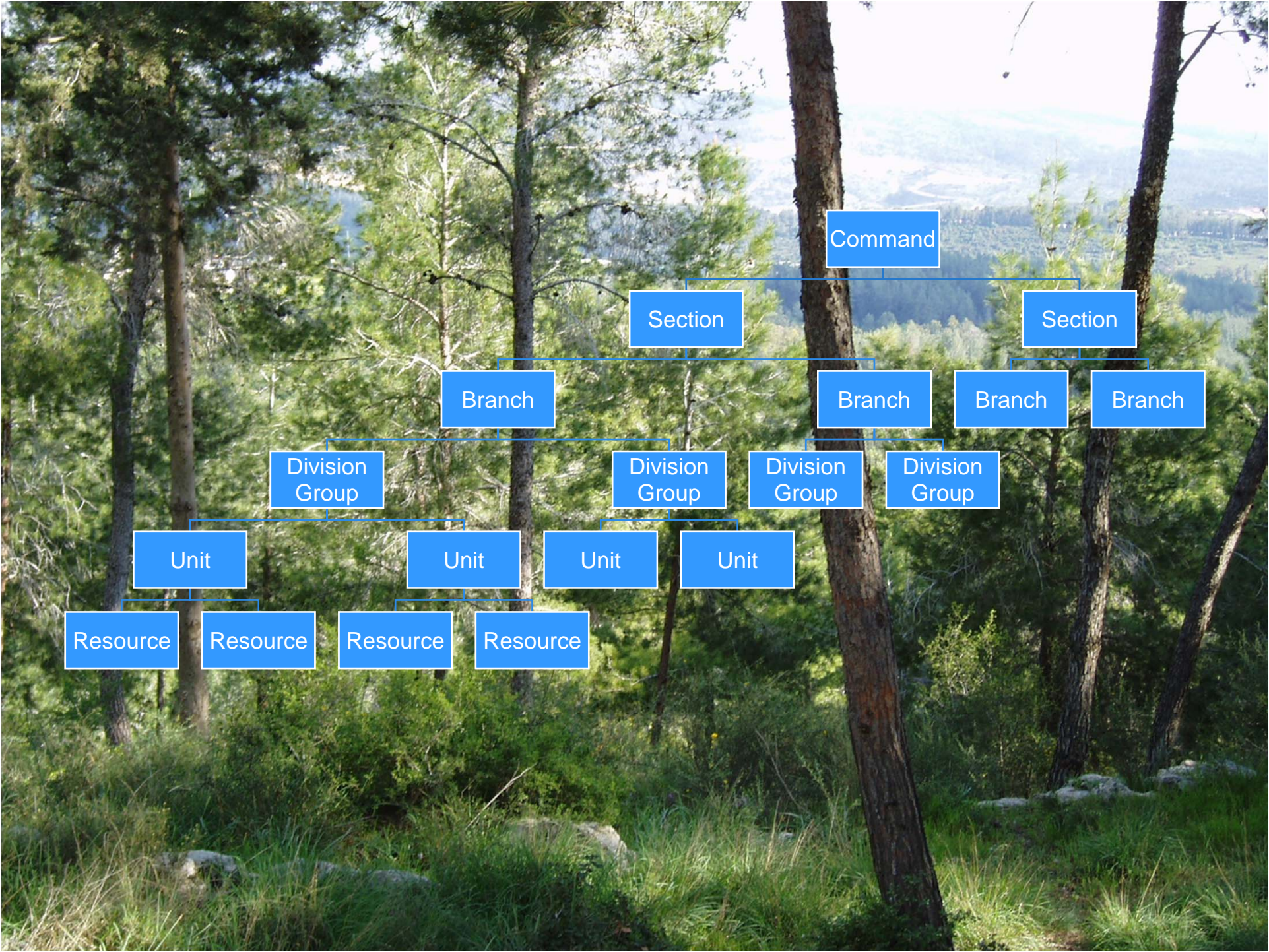
- NIMS
 - National Incident Management System
- SEMS
 - Standardized Emergency Management System
- HEICS
 - Hospital Emergency Incident Command System
- ICS
 - Incident Command System

Structure

- Defined responsibilities
- Lines of communication
- Organizational structure

Structure

- Command
- Sections
- Branches
- Divisions/Groups
- Units
- Resources



Command

Section

Section

Branch

Branch

Branch

Branch

Division Group

Division Group

Division Group

Division Group

Unit

Unit

Unit

Unit

Resource

Resource

Resource

Resource

Structure

• Command	1
• Sections	5
• Branches	25
• Divisions	125
• Groups	625
• Units	3,125
• Resources	<u>15,625</u>
• Total	19,531

Position Responsibilities

- Incident Commander
- Unified Command

Position Responsibilities

- Operations Branch Leader
- Logistics Branch Leader
- Planning Branch Leader
- Finance/Administrative Branch Leader

Position Assignment

- Incident Commander is first person on scene
 - IC may be reassigned when a more qualified person arrives
- Duties are assigned based on ability and experience, NOT seniority
 - Depending on the incident, different people would be most qualified for the same assignment

Position Assignment

- Position Assignment
 - Size of incident
 - Resources
- Emphasize workers
- Span of Control
 - 1 supervisor for 3 to 7 workers
 - Each position reports to only one supervisor

IC

IC Asst.

Branch A

Branch B

Group A

Group B

Group C

Group D

Person 1

Person 1

Person 1

Person 1

Person 2

Person 2

Person 2

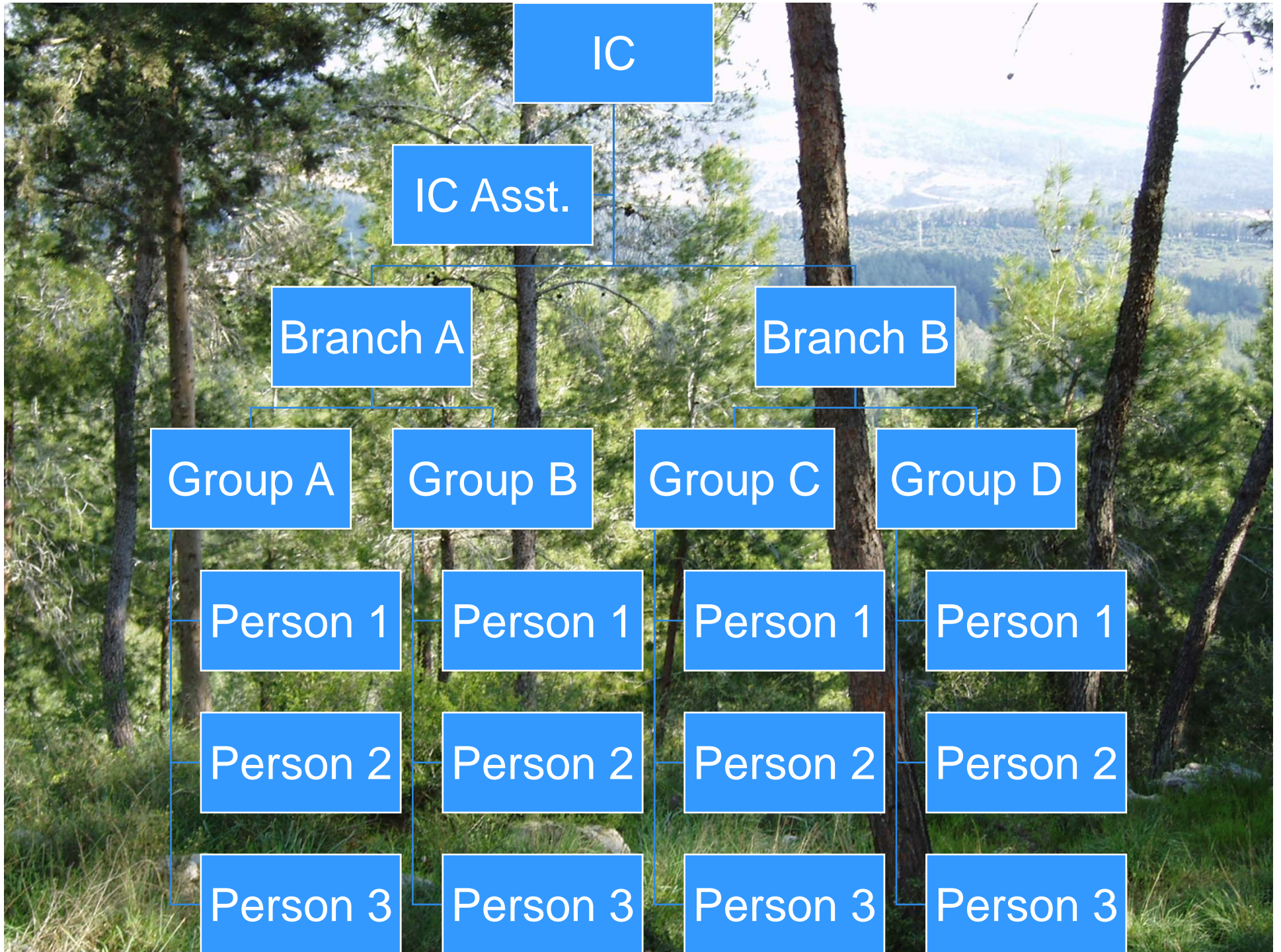
Person 2

Person 3

Person 3

Person 3

Person 3





??? Questions ???