



# NPS MCI Policy

# Objectives

- Become familiar with the NPS MCI Policy
- Know where to go for information
- Learn the major roles in an MCI

# Terminology

- Incident Command System
  - A nationally recognized approach to MCI's using common terminology and procedures, and a modular organization providing the framework for agencies to respond in a coordinated effort to incidents, regardless of size

# Terminology

- Multi-Casualty Incident (MCI)
  - 5 or more patients
  - Resources overwhelmed
- Victim
  - Person who is involved in an event or incident who has no complaints
- Patient
  - Person who has a medical complaint needing assessment, medical care and treatment

# Terminology

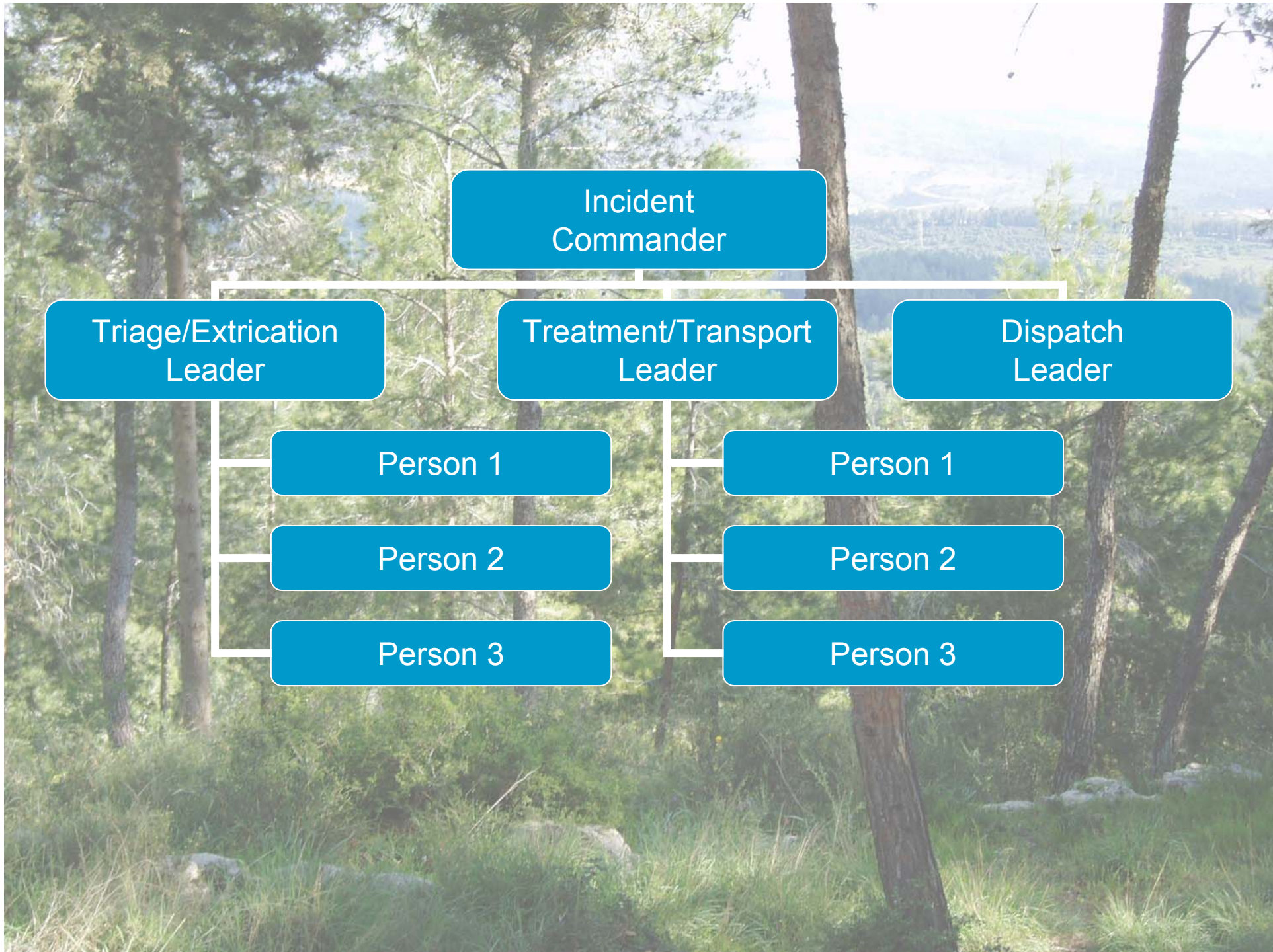
- Triage
  - The separation of large numbers of patients into smaller groups for the purpose of organization and estimation of the severity of illness/injury
  - The prioritization of care based on either acuity or need to provide the most benefit for the greatest number of patients
  - Sorting

# Terminology

- Simple Triage and Rapid Treatment (START)
  - Rapid, easy to use, triage tool
- Jump-START
  - START for children
    - Shorter than Broselow Tape
    - Generally, 8 years-old or less
- Fast Assessment, Resuscitation, Transport

# Triage Priorities

- Immediate (Red)
- Delayed (Yellow)
- Minor (Green)
- Morgue (Black)





# Position Responsibilities

- Incident Commander
  - The first rescuer on scene and the individual in charge of the overall incident, responsible for commanding and coordinating the disaster site response in its entirety and requesting additional resources as needed
  - A different person may assume the role of IC when they arrive on scene if they are more qualified

# Position Responsibilities

- Triage/Extrication Leader
  - Triage Leader
    - Reports to the IC, triages patients on-scene using START and Jump-START triage in order to assign them to one of four color coded areas for further care
  - Extrication Leader
    - Reports to the IC, facilitates movement of triaged patients from the scene of the accident to designated color coded treatment areas

# Position Responsibilities

- Treatment/Transportation Leader
  - Treatment Leader
    - Reports to the IC, assumes responsibility for treatment of patients in each of the color coded treatment areas
  - Transportation Leader
    - Reports to the IC and is responsible for the coordination, with dispatch, of patient transportation by ambulance or helicopter and maintenance of records pertaining to patient identification

# Position Responsibilities

- Dispatch Leader
  - Reports to the IC and is responsible for taking the initial MCI report from the IC and then relaying that information to the coordinating hospital

# Protocol Highlights

- Use radio failure protocols for MCI's with 5 or more patients
- No CPR unless adequate resources
- Extrication/Treatment/Transport Priorities
  - Immediate (Red)
  - Delayed (Yellow)
  - Minor (Green)
  - Morgue (Black)

**Incident Commander**

**Triage/Extrication**

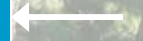
**Treatment/Transport**



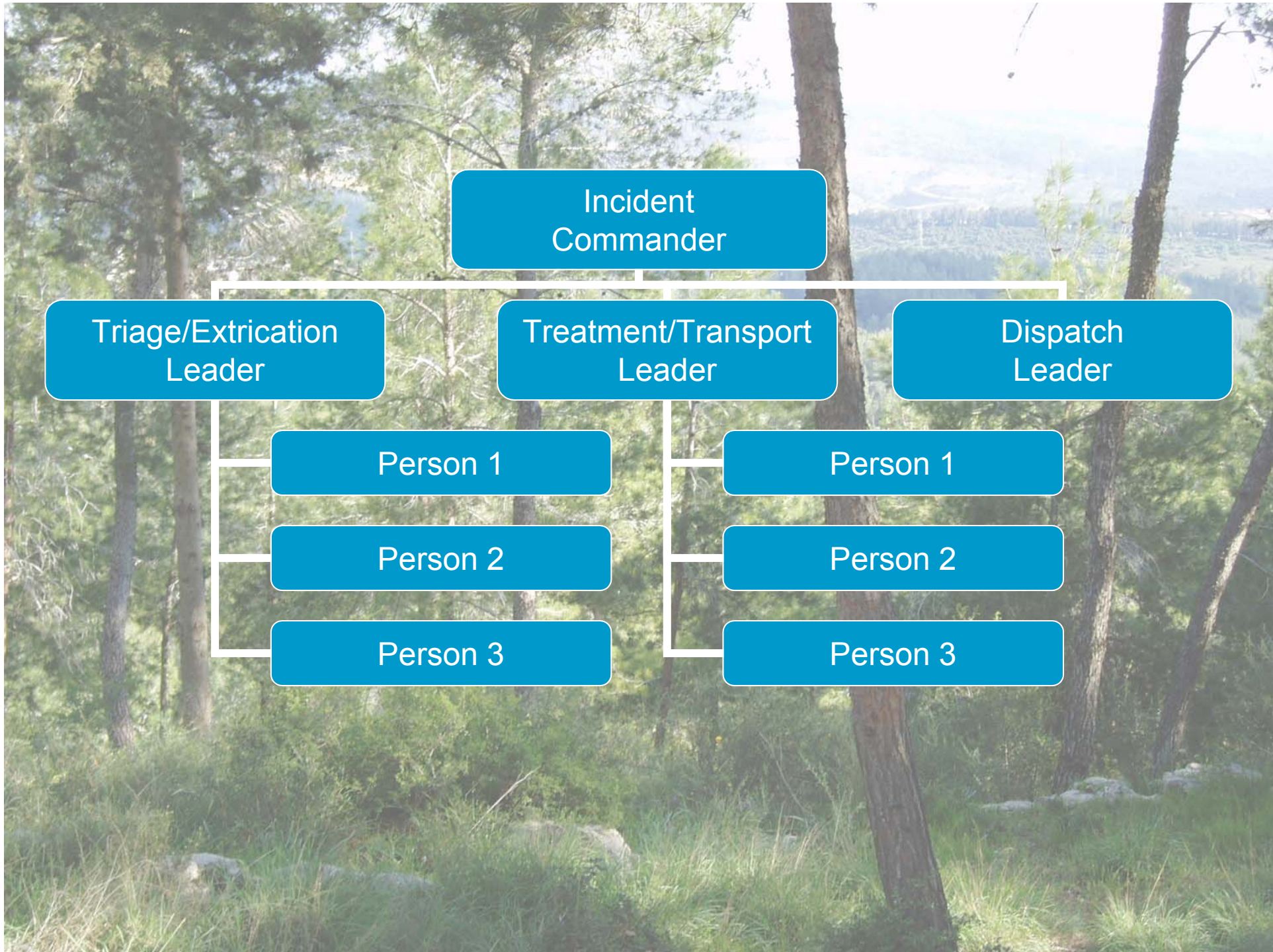
**Out**

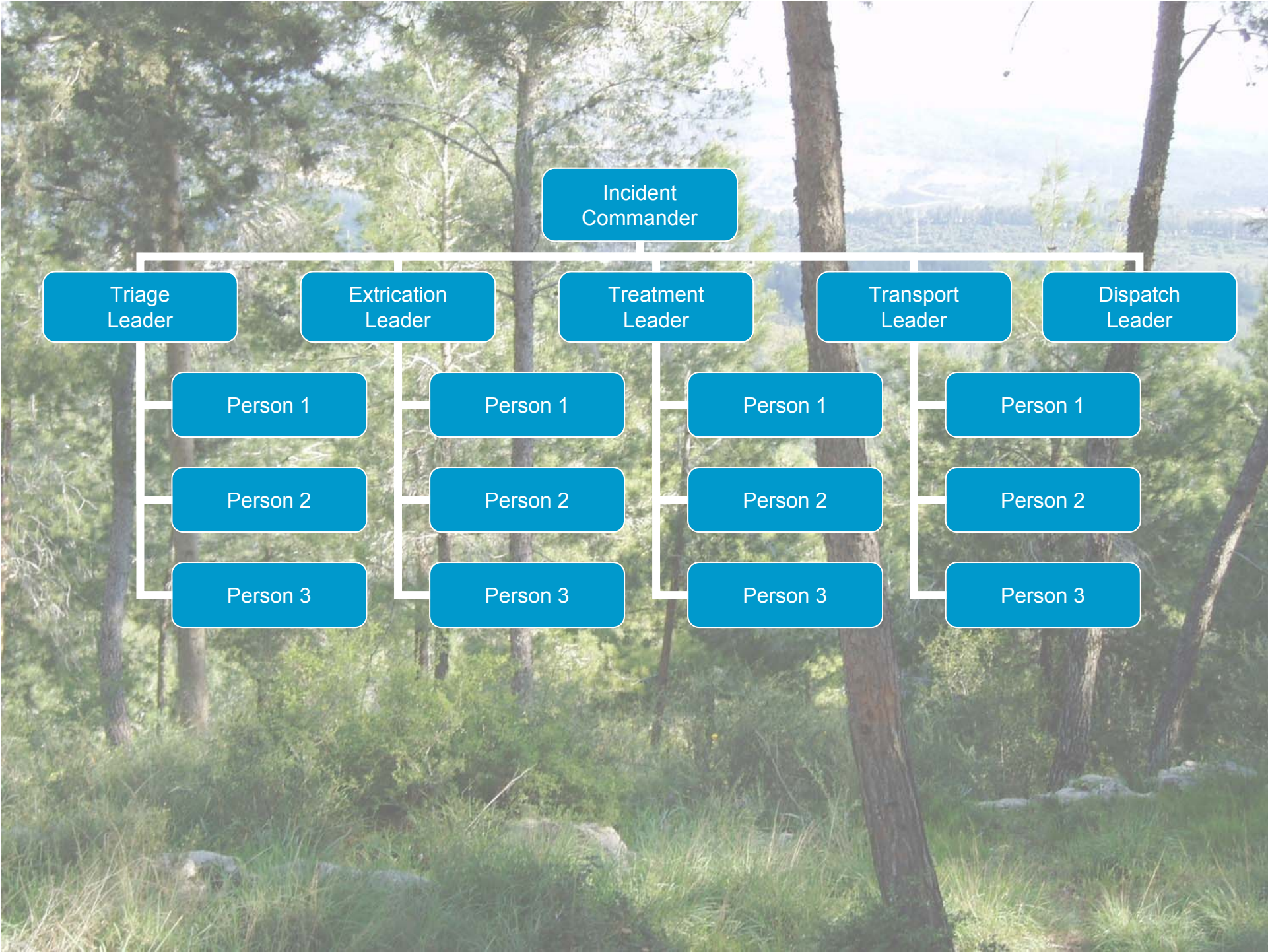


**In**

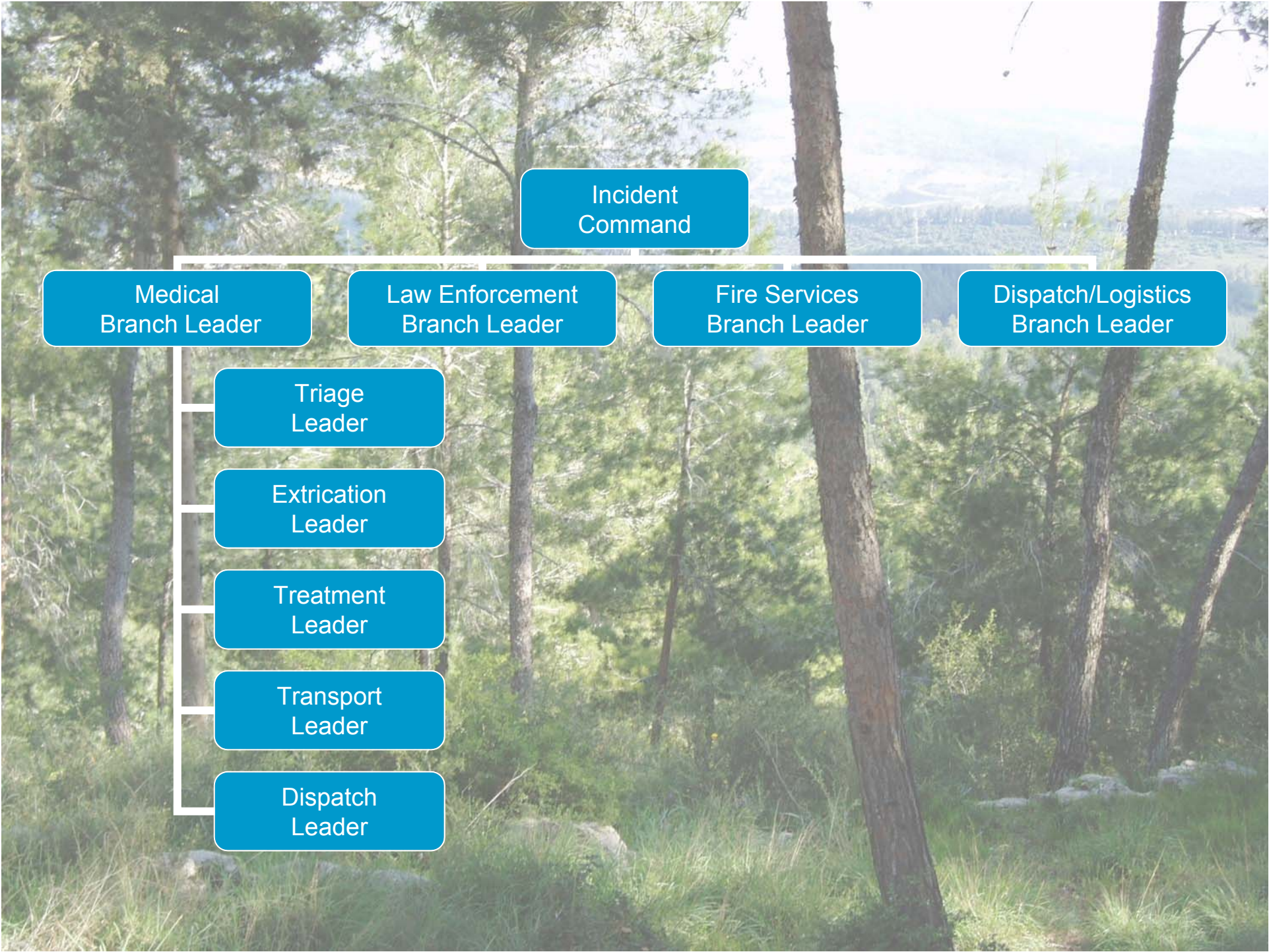


**Flow of Patients**









Incident  
Command

Medical  
Branch Leader

Law Enforcement  
Branch Leader

Fire Services  
Branch Leader

Dispatch/Logistics  
Branch Leader

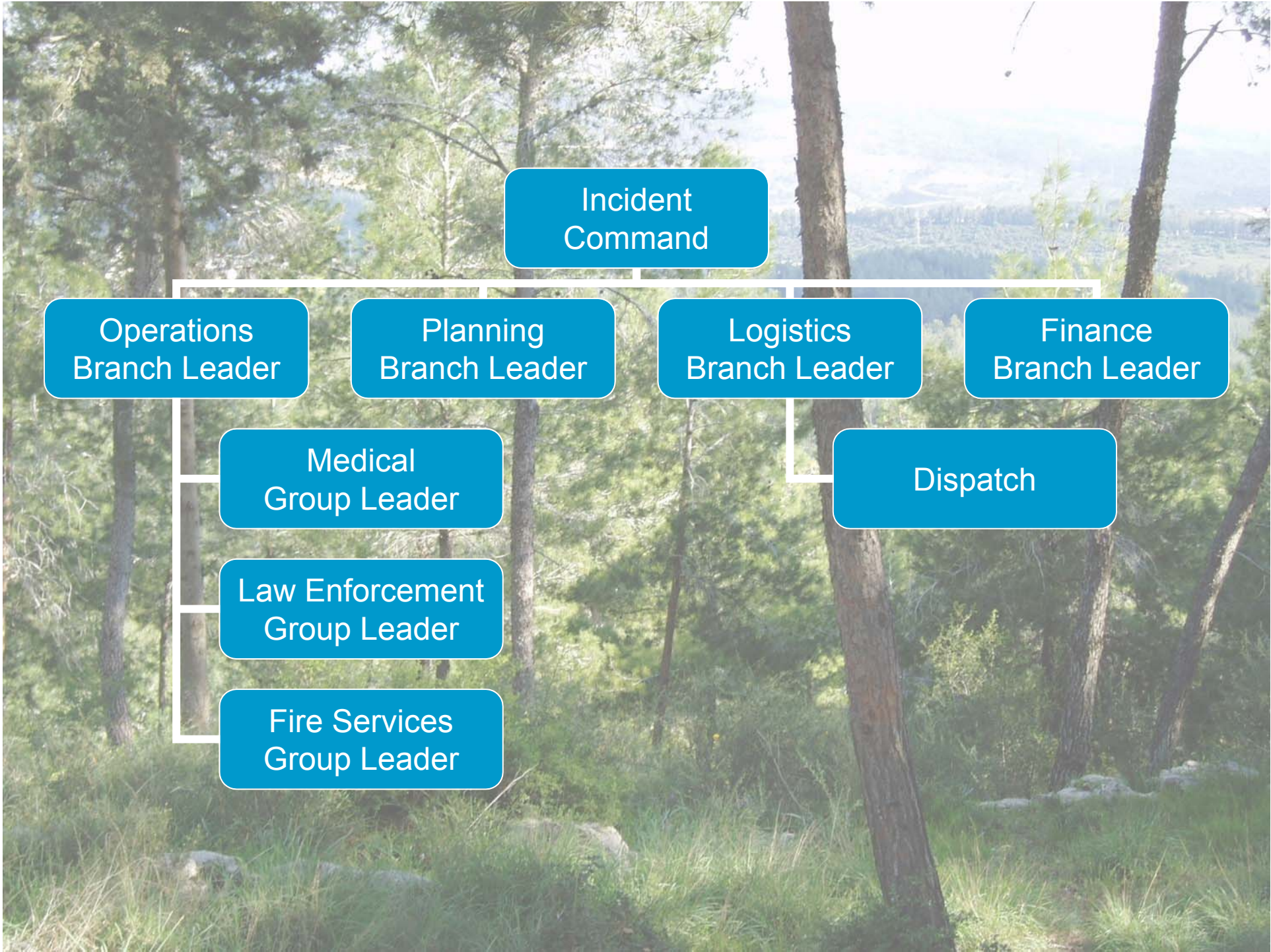
Triage  
Leader

Extrication  
Leader

Treatment  
Leader

Transport  
Leader

Dispatch  
Leader



# Tools

- Patient Tags/METTAGS
- Transportation Log
  - Triage Leader
  - Transportation Leader
- Resource/Personnel Request Log
  - All positions requesting resources or personnel
  - Optional
- Leader Checklists



# Leader Checklist

- I report to:

- 1) \_\_\_\_\_ Position: \_\_\_\_\_ Time: \_\_\_\_\_

- These people report to me:

- 1) \_\_\_\_\_ Position: \_\_\_\_\_ Time: \_\_\_\_\_

- 2) \_\_\_\_\_ Position: \_\_\_\_\_ Time: \_\_\_\_\_

- 3) \_\_\_\_\_ Position: \_\_\_\_\_ Time: \_\_\_\_\_

- 4) \_\_\_\_\_ Position: \_\_\_\_\_ Time: \_\_\_\_\_

- 5) \_\_\_\_\_ Position: \_\_\_\_\_ Time: \_\_\_\_\_



??? Questions ???